

# SHATNEZ LABORATORY

# CONSUMER ALERT

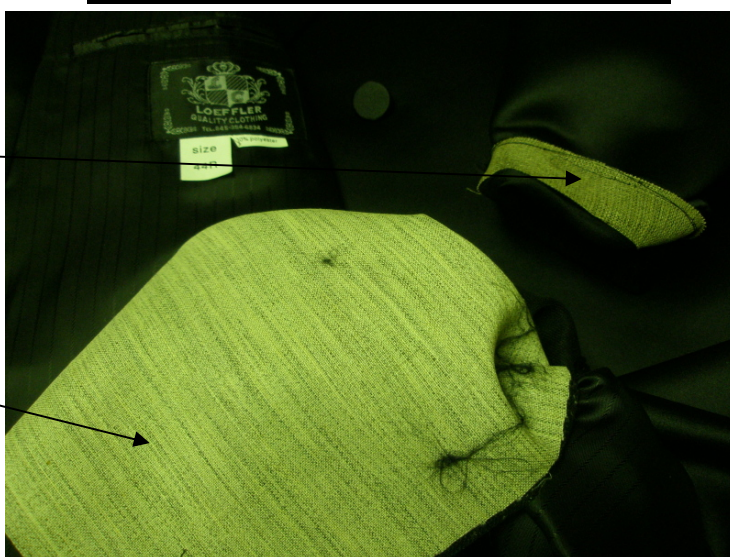
Series Number: 028

Date: June '07

## Loepler Beketche

Cuffs reinforced with Linen

Interlining contains wool



Pictured above is a Polyester "Loeffler" beketche. The cuffs of the sleeves were reinforced with a linen canvas, while the interlining contains a significant amount of wool.

Question: Why was linen used in the cuff reinforcement?

Answer: A Polish seamstress in Lakewood added the canvas when she shortened the sleeves.

This incident illustrates that alterations such as lengthening a skirt, adding shoulder pads, shortening sleeves and repairing a tear can turn a Shatnez-free garment into a Shatnez garment. Altered garments should be sent for retesting.

Edited by: R' Yosef Stolz (Los Angeles ,Ca)

---

If you have any questions about the information provided in this series please contact:  
Lakewood Shatnez Laboratory • 641 7<sup>th</sup> Street • Lakewood, NJ • 08701 • (732) 364-7056